

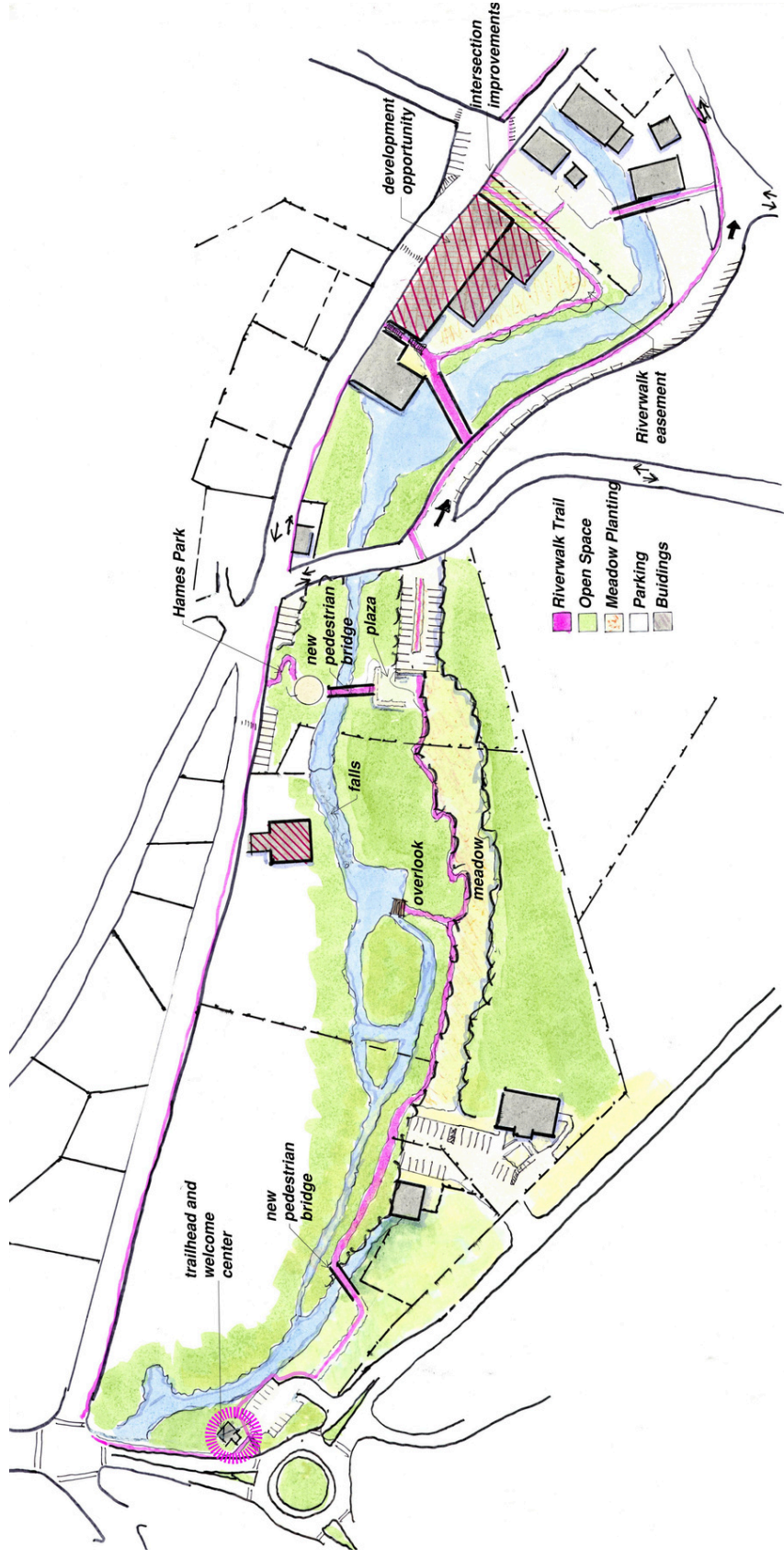
Forward Sunapee

Riverwalk and Harbor Tree

Riverwalk Improvements

Overview

The Sunapee Harbor Riverwalk presents a unique and powerful hands-on opportunity to communicate the natural and human history of Sunapee to both residents and visitors. However, the Riverwalk does not currently live up to this potential, primarily due to a lack of clear definition and a cohesive sense of place. In order to realize the potential of the Riverwalk, there must be a consensus as to what the Riverwalk should be, what message it should communicate, and how to best tell this story as a visitor passes through. The map below highlights some ideas from the Charrette Team about how to accomplish this, including some potential rerouting of the trail.



The Sunapee Riverwalk, with proposed additions and changes, some of which are detailed on the following pages.

Riverwalk Improvements Placemaking & Signage

Recommendations

One of the best ways to communicate the story of a place to visitors is through signage. As visitors navigate through the Riverwalk, consider using interpretive signage to educate them on the history of Sunapee Harbor and the Sugar River. Signs should be able to be quickly read (according to the national park service, 45 seconds or less is ideal) and establish a narrative that visitors can follow.

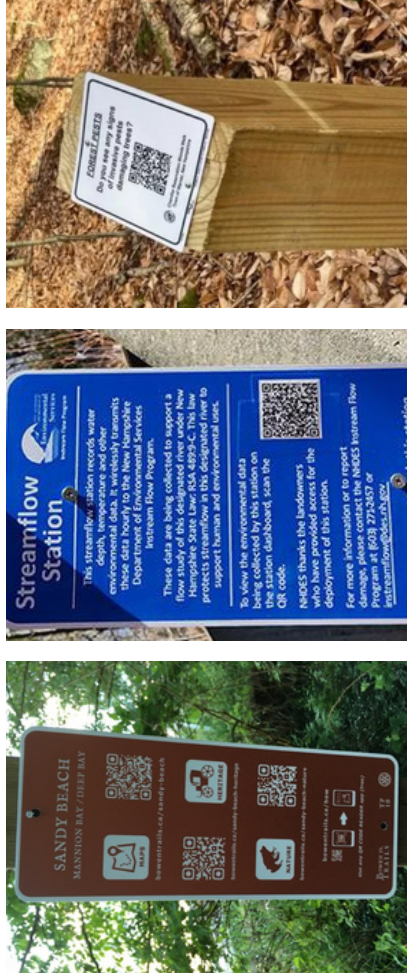
Consider placing more signage at important points on the Riverwalk. The information on the sign depicted in the upper right photo could be broken up and placed on smaller signs throughout the Riverwalk at relevant locations. Additionally, for cohesiveness throughout the entire harbor area, consider using a similar universal design as the wayfinding signage for visitors to the central Harbor area. More on wayfinding is detailed on page 28 of this report.



Signage along the Sunapee Riverwalk.



Signage outside the Sunapee Welcome Center.



Examples of Interpretive Signage that offers information when scanned.

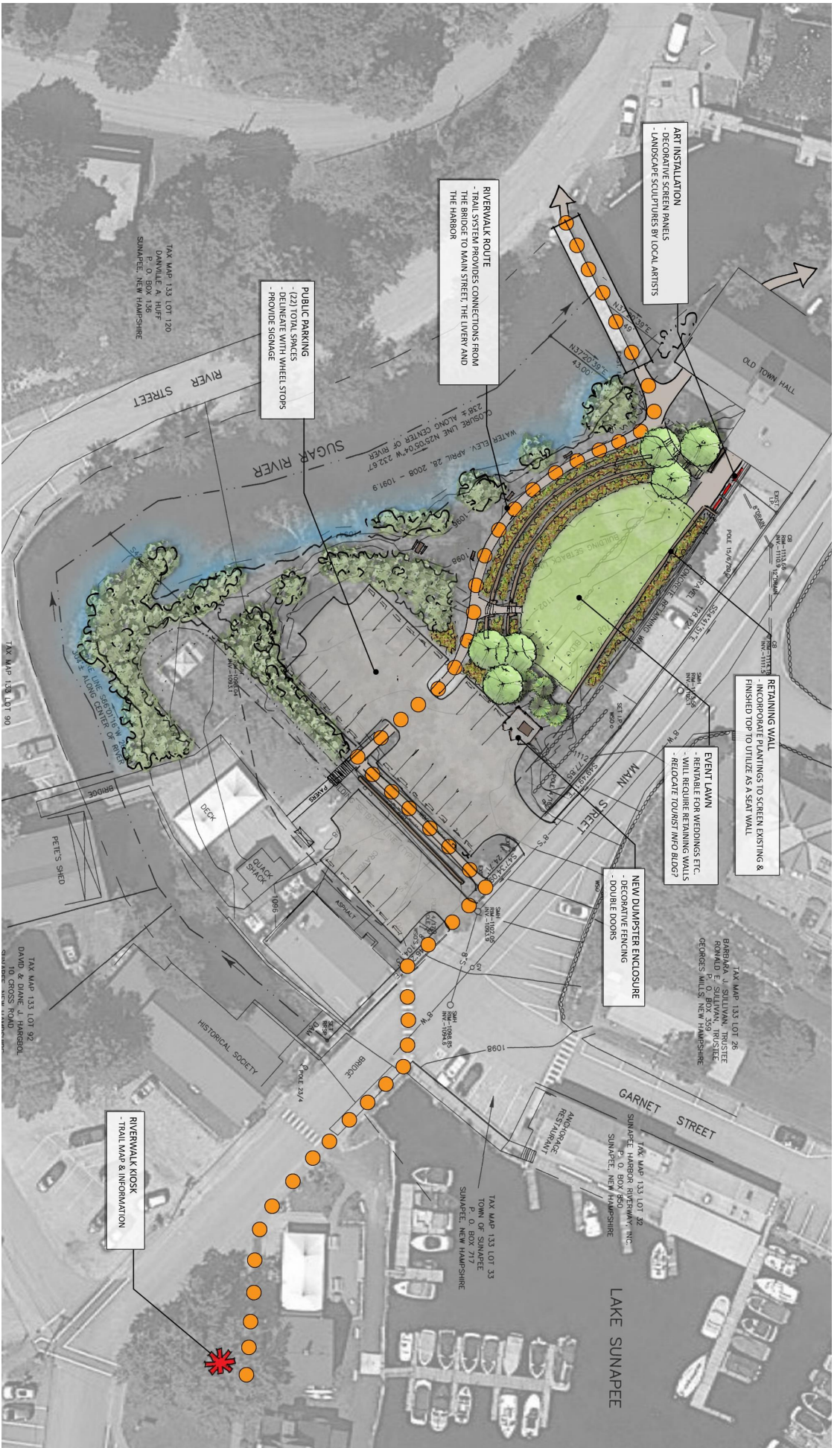
Are there other opportunities in Sunapee to use signage to enhance underutilized spaces?

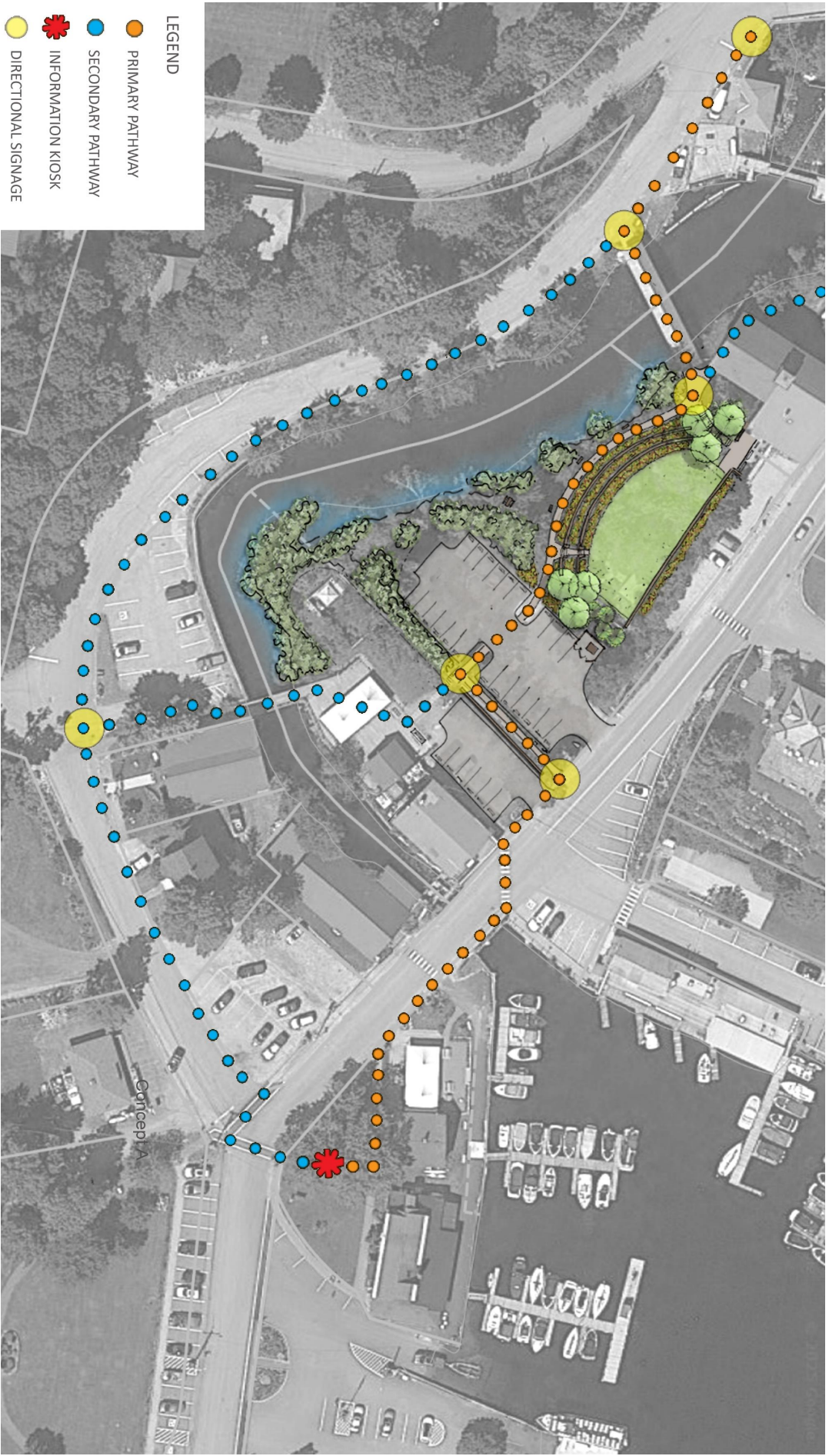
Progress To Date

- Formed Riverwalk Committee - DHoffman (Facilitator), SParsons, WNolin, JKellner, CLockwood, JHarrison, MBergeron, PSchwarkopf, DMarino, DCarey, JBowers
- Raised Funds to Get Started - Grass Roots/Coins up to Large Donations
- Replaced Tree - Red Maple (native) to replace Silver Maple
- Engaged Landscape Designer - Initial ideas for priority properties
- Approved Priority Plans - Reviewed and approved initial efforts focused on Harbor House lot (next to Livery) for 2025 completion

RIVERWALK/ HARBOR HOUSE LOT

PHASE 1 CONCEPT





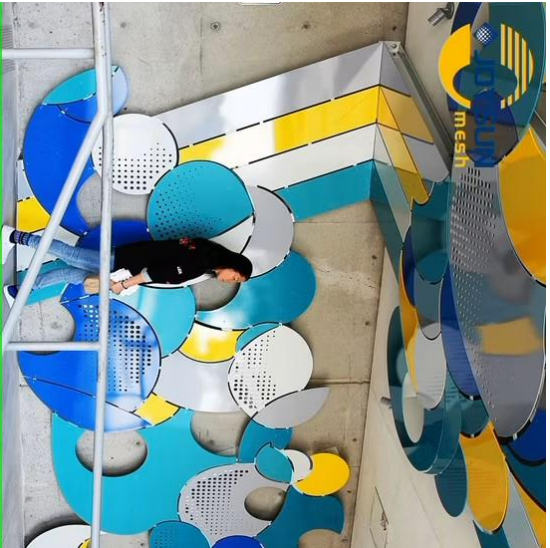
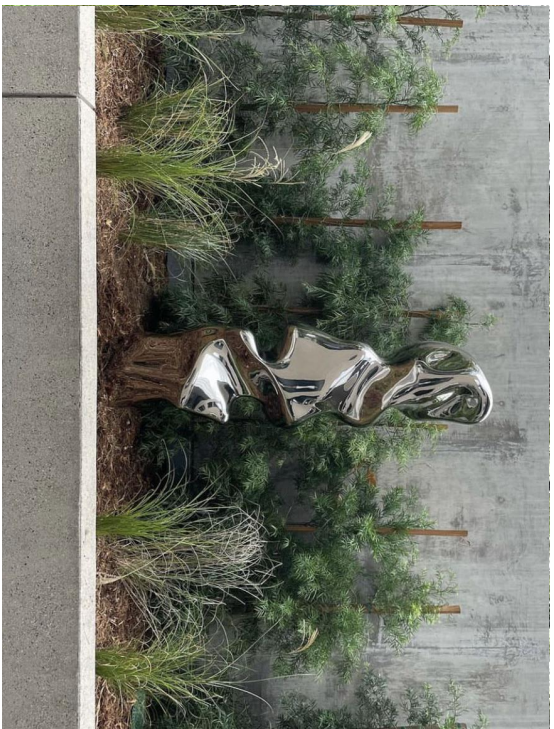
LEGEND

- PRIMARY PATHWAY
- SECONDARY PATHWAY
- ★ INFORMATION KIOSK
- DIRECTIONAL SIGNAGE



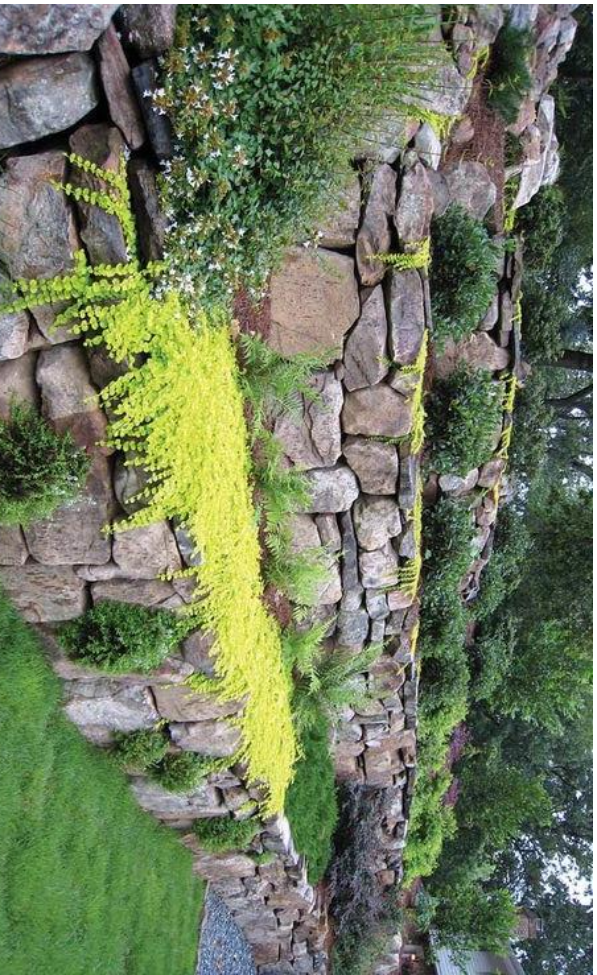
JCLA | RIVERWALK/ PHASE 1 CONCEPTS
LAND DESIGN

HARBOR PATHWAY ROUTING



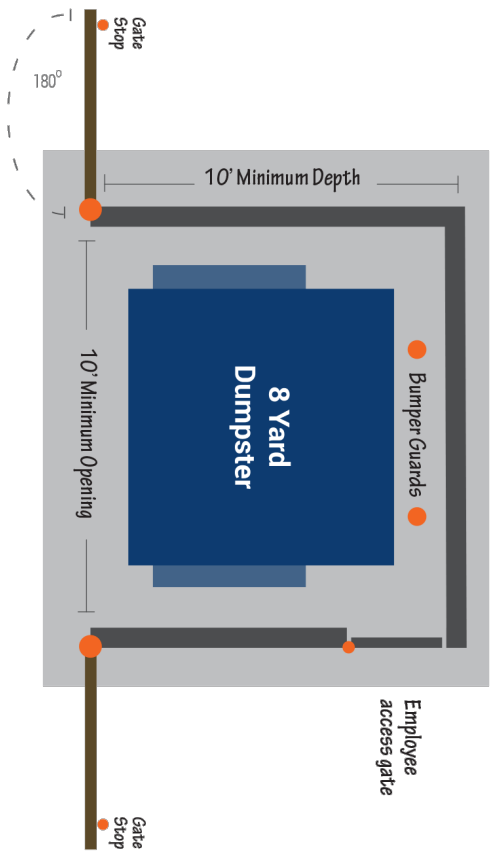
RIVERWALK/ HARBOR HOUSE LOT

WALL SCREENINGS / ART INSTALLATIONS



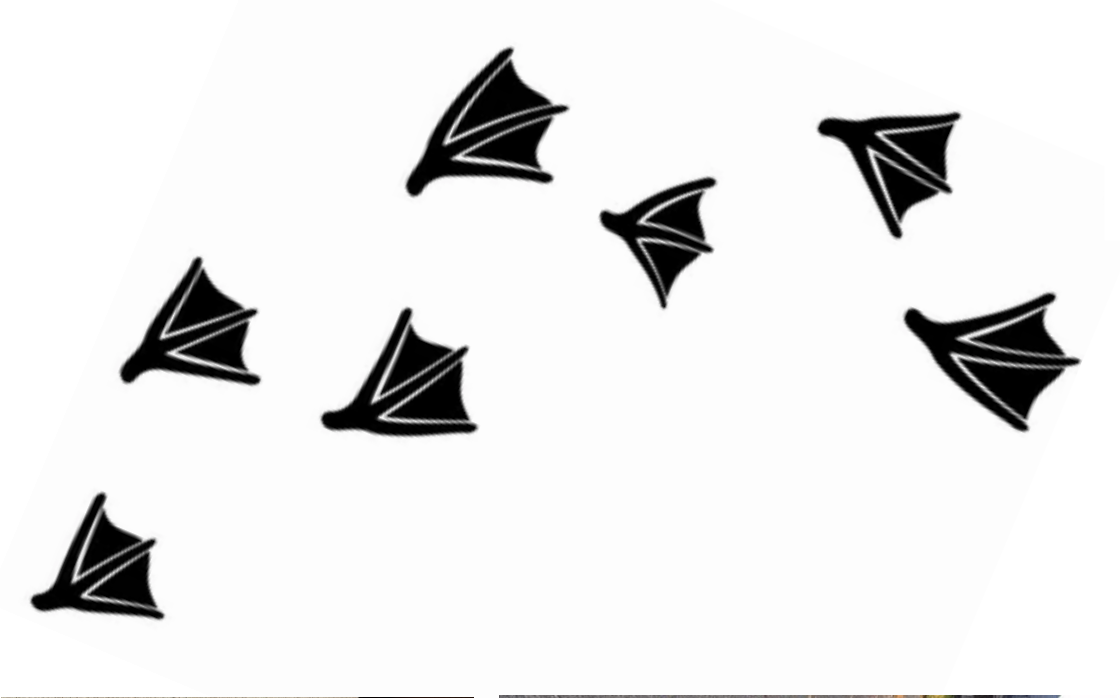
RIVERWALK/ HARBOR HOUSE LOT

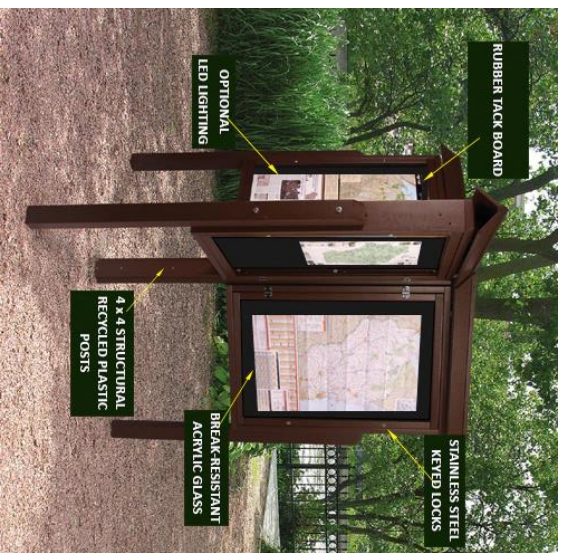
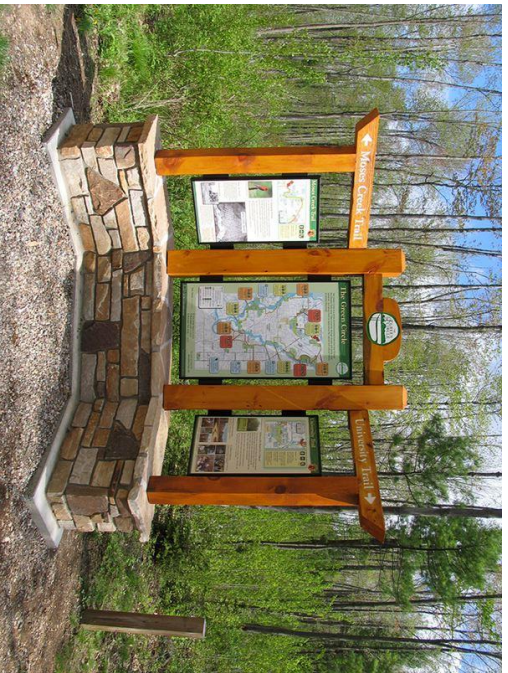
RETAINING WALLS



RIVERWALK/ HARBOR HOUSE LOT

DUMPSTER ENCLOSURE & PARKING





RIVERWALK/ HARBOR HOUSE LOT

INFORMATION KIOSK

Next Steps

- Solicit Proposals for Priority Properties
- Implement Priorities for 2025 - signage, landscaping, maps, etc
- Begin Designs for Next Priorities
- Solicit Community and Select Board Support
- Continue Fundraising